

# Was It A Morning Like This

Words and Music by  
Jim Croegaert

♩ = 64 **VERSE 1**

D A D D/F# G D/F# A



1. Was it a morn-ing like this, \_\_\_ when the sun still hid from Je - ru - sa -

5 Bm G Bm F# Bm F# G<sup>2</sup> G



-lem \_\_\_ and Mar - y rose from her bed to tend the Lord she thought was dead? \_\_\_

**VERSE 2 & 3**

10 D A D D/F# G D/F# A



2. Was it a morn-ing like this \_\_\_ when Ma - ry walked down \_ from Je - ru - sa -

3. Was it a morn-ing like this \_\_\_ when Pe - ter and John ran from Je - ru - sa -

15 Bm G G/B F# Bm F#



-lem \_\_\_ and two an - gels stood at the tomb, bear - ers of news  
-lem; \_\_\_ And as \_\_\_ they raced t'ward the tomb, be - neath their feet

**CHORUS 1**

19 G A D A D G D/F# A A<sup>SUS</sup> A



she would hear soon? \_\_\_ Did the grass sing? \_ Did the earth re - jice to feel You a -  
was there a tune? \_\_\_



55

Bm/A G G/B D/F# Em A A<sup>2sus</sup>



\_\_\_\_\_ He is ris - en! Hal - le - lu - jah! Hal - le - lu - jah! \_\_\_\_\_

60

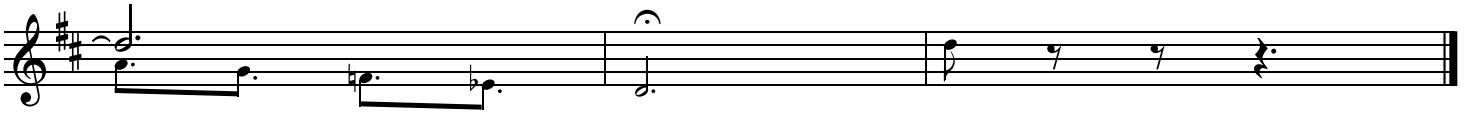
A D Bm<sup>2</sup> Bm Bbmaj<sup>7</sup> Gm/Bb



— Hal - le - lu - jah! \_\_\_\_\_

63

G<sup>2</sup> G F E<sup>b</sup> D



—