

# Unwavering

Words and Music by  
Matt Maher

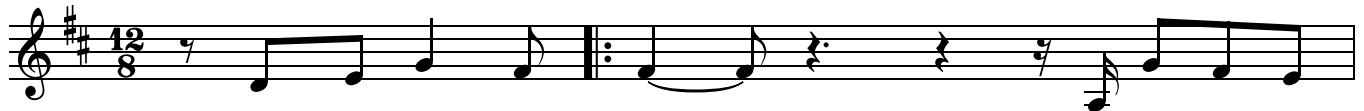
♩=86

## VERSE

Em<sup>7</sup>

D

G



1. Bless - ed are the poor, — the king - dom is  
(2. Bless - ed are the) right - eous on bend - ed

2

D

Bm<sup>7</sup>



theirs. A - live in the prom - ise to be dead \_ to the \_  
knee, bound in this free - dom, com - mit - ted to \_\_\_\_\_

4

Em<sup>7</sup>

D

G



— world. Bless - ed are the meek in awe of You  
— You. Bless'd are those who see the heights \_ of

6

D

G

D/A

A



Fa - ther, the word at Your right hand, Spir - it of  
glo - ry, found in the val - ley, in suf - fring for

## CHORUS

8

D

G

D

G

D



truth. Un - wa - ver - ing is Your voice, un - wa - ver - ing  
You.

10

A

D

Bm<sup>7</sup>

A/C#

D

Bm<sup>7</sup>



is Your hand, un - wa - ver - ing is the heart that bled for the

12 A G D

sins of man. Un - wa - ver - ing is Your will, un - wa - ver - ing

14 A Bm<sup>7</sup> G D/A A Last time to Coda ⊕

is Your plan, the fount of sal - va - tion on which we will

16 1. INSTRUMENTAL 1 D G D A<sup>7</sup> D G D

stand.

19 Bm<sup>7</sup> G

20 Em<sup>7</sup> 2. D G D D.S. al Coda

2. Bless - ed are the stand. Un - wa - ver - ing

22 ⊕ Coda Bm<sup>7</sup> G D/A A

stand. The fount of sal - va - tion, on which we will

24 INSTRUMENTAL 2 G A G A

stand. Send us out to

ENDING

28 G A G

be Your hands and \_ feet, send us out to be Your hands and

31 A G A

feet, send us out to be Your hands and \_ feet, \_ send us out to \_

34 G A G

\_ be \_ Your hands and \_ feet. \_ Send us out to be Your hands and .

37 A G A

\_ feet, \_ send us out to be Your hands and \_ feet, \_ send us out to

40 G A

be Your hands and \_ feet. \_\_\_\_\_

42 G A G A

\_