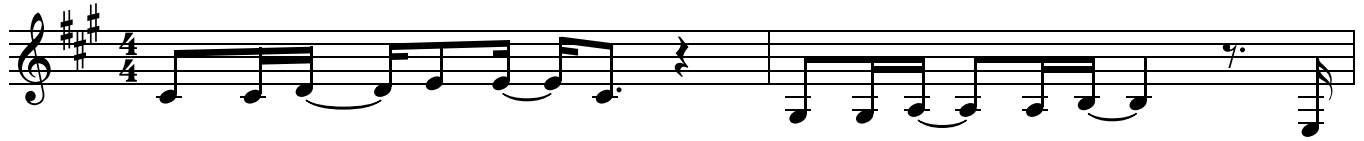


# Untitled Hymn (Come To Jesus)

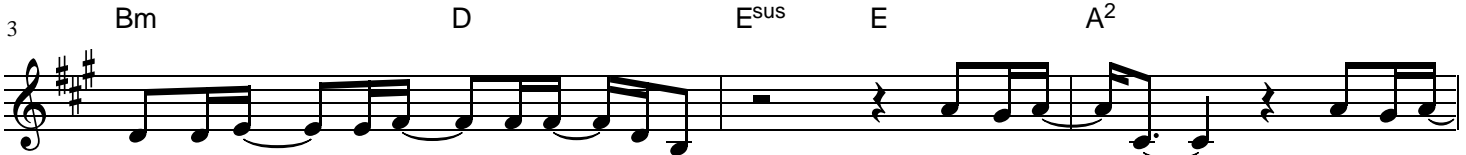
Words and Music by  
Chris Rice

♩=60 **VERSE 1**

A Bm A/C# E F#m<sup>7</sup> E/G#



1. Weak and wound - ed sin - ner, lost and left \_ to die; \_ O,



3 Bm D E<sup>sus</sup> E A<sup>2</sup>  
raise your head, \_ for Love \_ is pass - in' by. Come to Je - sus, \_ come to Je -



6 D(add4) D A E A  
- sus, come to Je - sus \_ and live!

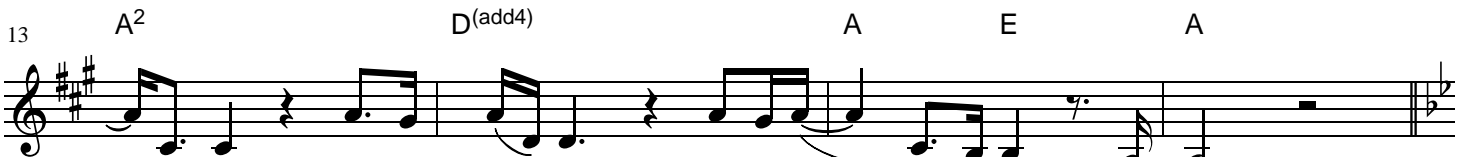
**VERSE 2**



9 A Bm A/C# E F#m E/G#  
2. Now your bur - den's lift - ed and car - ried far \_ a - way, \_ and



11 Bm Bm/D E<sup>sus</sup> E  
pre-cious blood \_ has washed \_ a - way \_ the stain. \_ So sing to Je -



13 A<sup>2</sup> D(add4) A E A  
- sus, \_ sing to Je - sus, sing to Je - sus and live!

VERSE 3

17  $B\flat$   $Cm^7$   $B\flat/D$  F Gm F/A

3. Like a new - born ba - by, don't be a - fraid \_ to crawl. \_ And re -

19 Cm  $Cm/E\flat$   $F^{sus}$  F

-mem - ber when \_ you walk, \_ some - times \_ we fall. \_ So fall \_ on Je -

21  $B\flat$   $E\flat^{(add4)}$   $B\flat$  F

- sus, \_ fall \_ on Je - sus, \_ fall \_ on Je - sus and

VERSE 4

24  $B\flat$   $E\flat/G$   $B\flat$   $Cm^7$   $B\flat/D$

live. 4. Some - times the way is lone - ly, and

27 F Gm F/A Cm  $Cm/E\flat$

steep and filled \_ with pain, \_ so if your sky \_ is dark and pours \_ the rain, .

29  $F^{sus}$  F  $B\flat$   $E\flat^2$

\_ then cry to Je - sus, \_ cry \_ to Je - sus, cry to Je -

32 B $\flat$  F E $\flat$ <sup>2</sup>/G F/A G/B

- sus and live! 5. O, and

**VERSE 5**

35 C Dm<sup>7</sup> C/E G Am G/B

when the love \_\_\_ spills o - ver, and mu - sic fills \_\_\_ the night, and

37 Dm C/E F F<sup>2</sup> G<sup>sus</sup> G C

when you can't \_ con-tain \_ your joy \_ in - side, \_\_\_ then dance for Je - sus, \_ dance for

40 F C G C F<sup>2</sup>

Je - sus, \_\_\_ dance for Je - sus \_\_\_ and live! \_\_\_

**VERSE 6**

43 C G C Dm C/E G Am G/B

6. And with your fi - nal heart - beat kiss the world \_ good-bye, \_ then

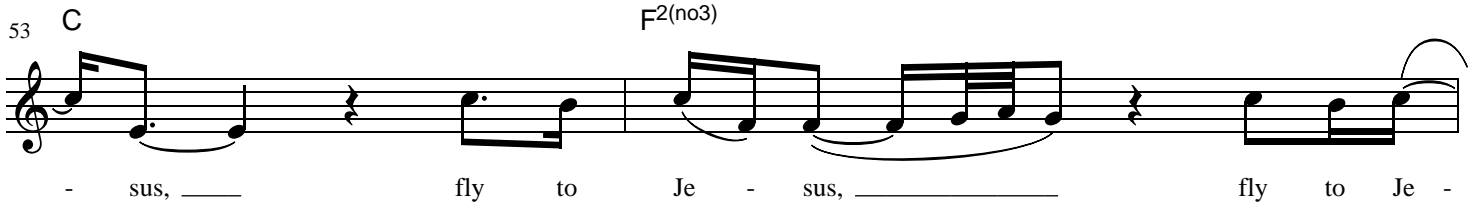
46 Dm Dm/F G<sup>sus</sup> G C

go in peace, \_ and laugh on glo - ry's side. And fly to Je - sus, fly to

49 F C G C F C G

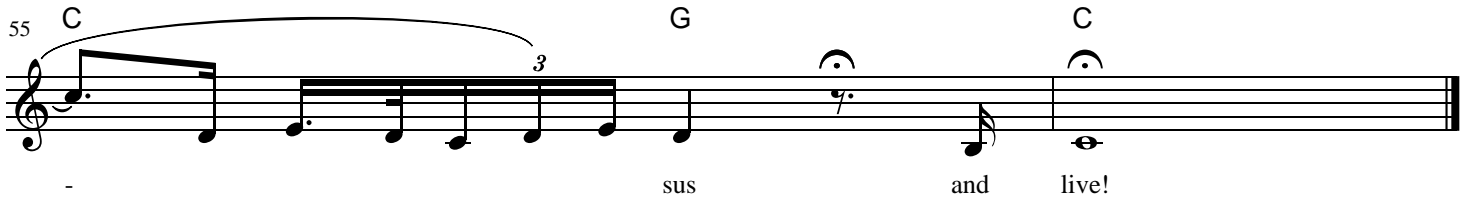
Je - sus, fly to Je - sus \_\_\_ and live! \_\_\_ Fly to Je-

53 C F2(no3)



- sus, \_\_\_\_\_ fly to Je - sus, \_\_\_\_\_ fly to Je -

55 C G C



- sus and live!