

# Psalm 23

Words and Music by  
Stuart Townend

*G/c*  
*Ab/C*

$\text{♩} = 64$

*D* *A sus* *D*  
*E♭* *B♭sus* *E♭*



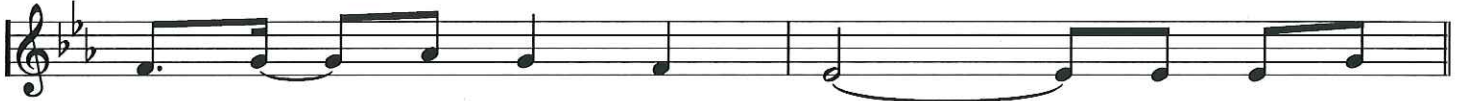
1. The Lord's my Shep - herd, I'll not want. He makes me lie in pas - tures  
2. He guides my ways in right - eous - ness, and He a - noints my head with  
3. And though I walk the dark - est path, I will not fear the e - vil

4 *A sus* *B♭sus* *A B♭* *G A♭* *A sus* *B♭sus* *B♭7* *E♭* *G/c* *Ab/C*



green. He leads me by the still, still wa - ters, His  
oil; And my cup, it o - ver - flows with joy, I  
one; For You are with me, and Your rod and staff are the

7 *E♭7* *Fm7* *A sus* *B♭sus* *A7* *B♭7* *E♭*



good - ness re - stores my soul. And I will  
feast on His pure de - lights.  
com - fort I need to know.

9 *E♭* *A sus* *B♭sus* *E♭* *G/c* *Ab/C*

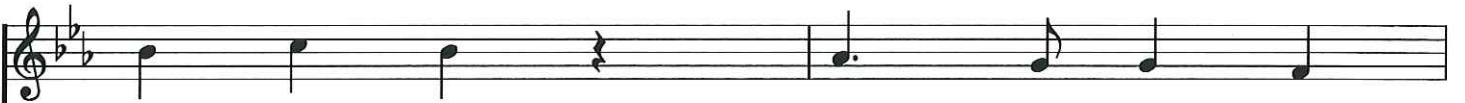


I will trust, I will trust in You. I will trust, I will



trust in You a - lone, and I will trust in You a -

12 *A4* *B♭sus* *A B♭* *G A♭* *A4* *B♭sus* *A7* *B♭7*



trust in You. End - less mer - cy



-lone; For Your end - less mer - cy

14

*D*

E $\flat$

*G/B*

A $\flat$ /C

*Em<sup>7</sup>*

Fm<sup>7</sup>

*A<sup>4</sup>*

*A<sup>7</sup>*

*D*

B $\flat$ sus

B $\flat$ <sup>7</sup>

E $\flat$



fol - lows me, good - ness \_ will lead me home. \_\_\_\_\_



fol - lows \_\_\_\_\_ me, Your good - ness \_ will lead me home. \_\_\_\_\_