



I Can Only Imagine

Words and Music by
Bart Millard

♩ = 80

Gmaj9



I can on - ly im - ag - ine _____ what it will be _____ like _____ when I walk _____

3 Cmaj9

Gmaj9



_____ by Your side. _____ I can on - ly im - ag - ine _____ what my eyes _____

6 Cmaj9



_____ will see _____ when Your face _____ is be - fore _____ me. _____ I can on - ly im -

9 Gmaj9

Cmaj9

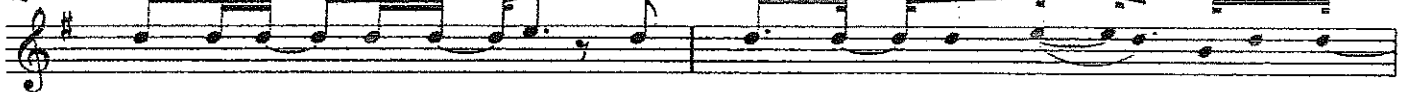


ag - ine. _____ Sur -



13 C2(no3)

D(add 4)

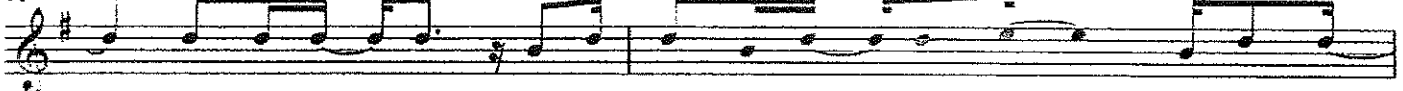


round - ed by _____ Your glo - ry, what will my _____ heart feel? _____ Will I dance _____

15 G2

G

Gmaj7



_____ for You, Je - sus, or in awe of You _____ be still? _____ Will I stand _____

CCLI Song #2978857

©2001, 2003 SimpleLife Music

For use solely with the SongSelect Advanced Terms of Agreement. All rights Reserved. www.songtouch.com

CCLI License #79826

I Can Only Imagine - 2

17 **C2(no3)** **D(add 4)**



_____ in ___ Your pres - ence or to my knees will ___ I fall? _____ Will I sing _____

19 **G2** **G** **Gmaj7**



___ hal - le - lu - jah? Will I be a - ble to speak at all? _____ I can on - ly _____

21 **C2(no3)** *2nd time to Coda* **D(add 4)** **Gmaj9**



_____ im - ag - ine, I can on - ly im - ag - ine. _____ I can on - ly im -

25 **Gmaj9** **Cmaj9**



ag - ine. _____ when that day _____ comes and I find _____ my - self _____ stand - ing in _____

28 **D7sus** **Gmaj9**



___ the Son. _____ I can on - ly im - ag - ine _____ when all I _____ will do _____ is for - ev -

31 **Cmaj9** **D7sus** **Gmaj9**



er, _____ for - ev - er wor - ship You. _____ I can on - ly im - ag - ine, _____

34 **Cmaj9** **D7sus** *D.S. al Coda*



I can on - ly im - ag - ine. _____ - _____ Sur -

I Can Only Imagine - 3

♩ Coda
37 D(add 4) Gmaj7

I can on - ly im - ag - ine. _____ Sur - round -

40 C2(no3) Dsus

ed by ___ Your glo - ry, what will my ___ heart feel? ___ Will I dance ___

42 Gmaj7 G Gmaj7 G

___ for You, Je - sus, or in awe of You ___ be still? ___ Will I stand ___

44 C2(no3) Dsus

___ in ___ Your _ pres - ence or to my knees will ___ I fall? ___ Will I sing ___

46 Gmaj7 G Gmaj7 G

___ hal - le - lu - jah? ___ Will I be a - ble to speak at all? ___ I can on - ly im - ag -

48 C2(no3) Dsus Gmaj7 G

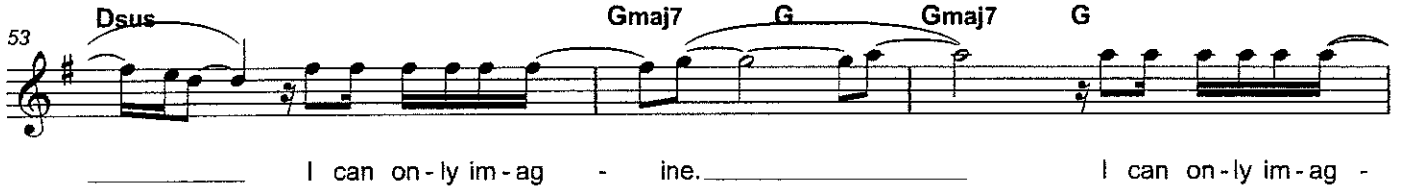
ine, ___ yeah, _____ I can on - ly im - ag - ine. _____

51 Gmaj7 G C2(no3)

___ I can on - ly im - ag - ine, _____ yeah, _____

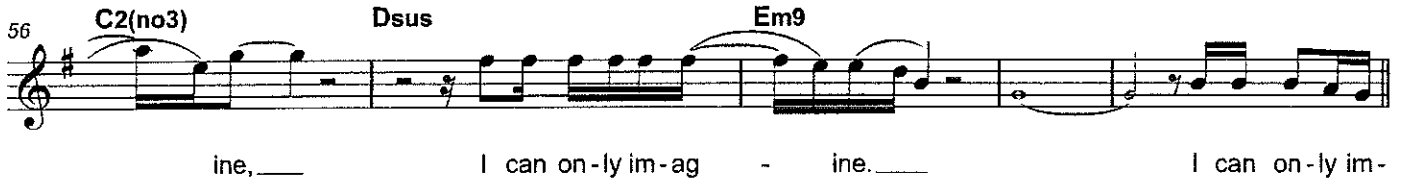
I Can Only Imagine - 4

53 **Dsus** **Gmaj7** **G** **Gmaj7** **G**



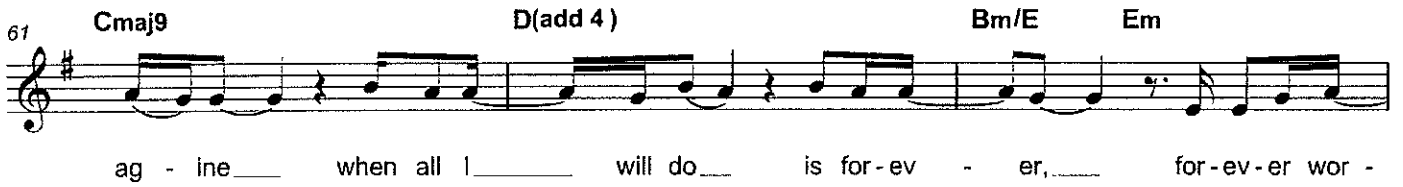
I can on-ly im-ag - ine. I can on-ly im-ag -

56 **C2(no3)** **Dsus** **Em9**



ine, I can on-ly im-ag - ine. I can on-ly im-

61 **Cmaj9** **D(add 4)** **Bm/E** **Em**



ag - ine when all I will do is for-ev - er, for-ev-er wor -

64 **Gmaj9** **Cmaj9** **D** **G**



ship You. I can on-ly im - ag - ine.