

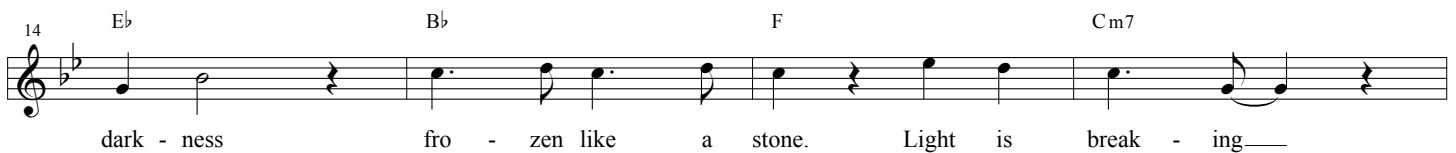
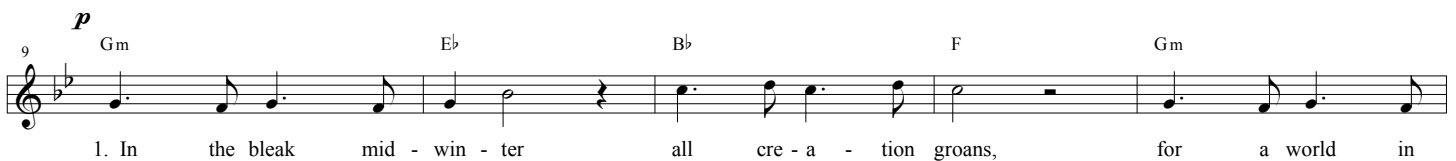
# He Shall Reign Forevermore

Words and Music by  
CHRIS TOMLIN  
and MATT MAHER

♩ = 122



## VERSE 1



## CHORUS



26 *E♭* *B♭* *F/A* *Gm*  
 — for - ev - er - more, — for - ev - er - more. — Un - to us — a Child

30 *E♭* *B♭* *F* *Gm*  
 — is born, the King — of kings — and Lord — of Lords. — And He shall reign

34 *E♭* *B♭* *F/A*  
 — for - ev - er - more, — for - ev - er - more. —  
*2nd time to CODA* ⊕

37 *Gm* *E♭* *B♭* *F*

**VERSE 2**

41 *mp* *Gm* *E♭* *B♭* *F/A*  
 2. If I were a wise man, I would trav - el far.

45 *Gm* *E♭* *B♭* *Dm7*  
 If I were a shep - herd, I would do my part. But, poor as

49 *Cm7* *E♭* *B♭* *F*  
 I am, — I will give — to Him — my heart. — And  
*D.S. al CODA* %

⊕ **CODA**  
 53 *p* *Gm* *E♭*  
 — Here — with - in — a man - ger lies — the One —

56 *B $\flat$*  *F/A* *Gm*  
— who made— the star - ry skies, this ba - by born— for sac -

59 *E $\flat$*  *B $\flat$*  *F/A* *mf*  
- ri - fice:— Christ, the Mes - si - ah! In - to—

62 *Gm* *E $\flat$*  *B $\flat$*   
— our hopes, in - to— our fears— the Sav - ior of— the world—

65 *F/A* *Gm* *E $\flat$ /G*  
— ap - pears,— the prom - ise of— e - ter - nal years:

CHORUS

68 *B $\flat$ /F* *F* *ff* *B $\flat$*  *E $\flat$ /B $\flat$*   
Christ, the Mes - si - ah! He shall reign— for - ev - er - more,

72 *B $\flat$*  *F/B $\flat$*  *B $\flat$ /D* *E $\flat$*   
— for - ev - er - more.— And He shall reign— for - ev - er - more,

76 *B $\flat$ /F* *F* *Gm* *E $\flat$*   
— for - ev - er - more.— He shall reign— for - ev - er - more,

80 *B $\flat$*  *F/A* *Gm* *E $\flat$*   
— for - ev - er - more.— And He shall reign— for - ev - er - more,

84 B♭ F/A Gm

— for - ev - er - more. — Un - to us — a Child —

Detailed description: This block contains the first line of music, measures 84 to 86. It is written in a treble clef with a key signature of two flats (Bb and Eb). The melody consists of quarter and eighth notes with some rests. Chord symbols Bb, F/A, and Gm are placed above the staff. The lyrics are: "for - ev - er - more. Un - to us a Child".

87 E♭ B♭ F

— is born, — the King — of kings — and Lord — of Lords. — And

Detailed description: This block contains the second line of music, measures 87 to 89. The melody continues with quarter and eighth notes. Chord symbols E♭, B♭, and F are placed above the staff. The lyrics are: "is born, the King of kings and Lord of Lords. And".

90 Gm E♭ B♭ F/A

He shall reign — for - ev - er - more, — for - ev - er - more. —

Detailed description: This block contains the third line of music, measures 90 to 93. The melody features quarter and eighth notes. Chord symbols Gm, E♭, B♭, and F/A are placed above the staff. The lyrics are: "He shall reign for - ev - er - more, for - ev - er - more.".

94 Gm E♭ B♭ F

Detailed description: This block contains the fourth line of music, measures 94 to 97. The staff is filled with diagonal slashes, indicating a piano accompaniment or a section where the melody is not written. Chord symbols Gm, E♭, B♭, and F are placed above the staff.

98 Gm E♭ B♭ F E♭

Detailed description: This block contains the fifth line of music, measures 98 to 101. The staff is filled with diagonal slashes, indicating a piano accompaniment. Chord symbols Gm, E♭, B♭, F, and E♭ are placed above the staff.