

Follow Me

Words and Music by
Beth Farris

♩ = 124

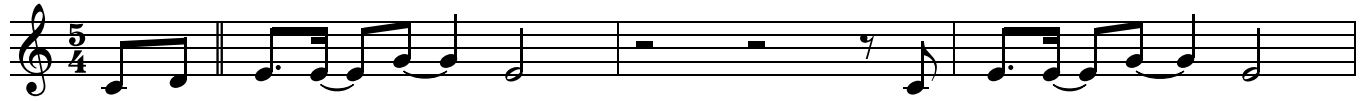
VERSE 1

C^{sus}

C

C^{sus}

C



1. At the end of _ my - self,

I'm emp - ty _ and _ dry.

4

C^{sus}

C



I have noth - ing to _ give

but sur -

7

G/B

C

C^{sus}

C



-ren - der _ in - side.

Let down _ your _ nets,

this

11

C^{sus}

C

C^{sus}

C



is not _ the _ end.

From now on, _ you'll _ be

CHORUS 1

15

G/B

C

F²

C



fish - ers _ of _ men.

Fol - low _ Me. _

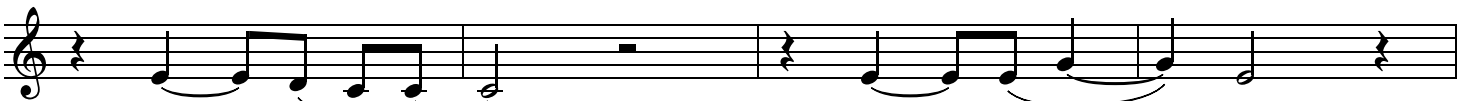
19

F²

C

F²

C



Fol - low _ Me. _

Fol - low _ Me.

VERSE 2

23 G C F² C

Fol - low _____ Me. 2. At the end of _____ my - self

27 F² C

judge - ment calls out _____ my _____ name. I've been

30 F² C G C

look - ing _____ for _____ love, but I'm swal - lowed _____ by _____ shame.

33 F² C

Throw a - way all _____ your _____ stones. Find for -

36 F² C F² C

-give - ness _____ in _____ Me. Let Me be your _____ new _____ pas - sion.

CHORUS 1

39 G C F²

My daugh - ter, _____ you're _____ free. Fol - low _____ Me..

43 C F² C F² C

_____ Fol - low _____ Me. _____ Fol - low _____ Me.

VERSE 3

48 G C F² C

Fol - low Me. 3. At the end of my - self,

52 F² C

I've done things my own way. This world

55 F² C G/B C

gave up on me, now it's death I do pay. You

59 F² C F² C

know who I am. I'm sin's sac - ri - fice.

62 F² C

To - day you will be in

CHORUS 1

65 G C F² C

par - a - dise. Fol - low Me.

69 F² C F² C

Fol - low Me. Fol - low Me.

73 G C Dm

BRIDGE

Fol - low Me. Who is this Man who calmed .

77 C Dm C G

the seas? And who is this Man who loves the least of these? .

81 F² C F²

I am the prom - ised One. God gave His on - ly Son. .

85 C Dm G/B

And those who be - lieve will live e - ter - nal -

CHORUS 2

89 C F²/C C

ly. At the end of your-self, just fol - low Me. If you

93 F²/C C F²/C C

lose ev - 'ry-thing, just fol - low Me. I will give you new life; just fol - low Me.

97

1. G C

2. G C

Fol - low _____ Me. If at the Fol - low _____ Me.

Detailed description: The image shows a musical score for a song. It consists of a single staff in treble clef. The score is divided into two endings. The first ending (marked '1.') starts at measure 97 and contains the lyrics 'Fol - low _____ Me.' The second ending (marked '2.') starts at measure 100 and contains the lyrics 'Fol - low _____ Me.' The lyrics 'If at the' are positioned between the two endings. Above the staff, the chords G and C are indicated for both endings. The music features a melody of eighth and quarter notes with a fermata over the final note of each ending. A repeat sign is present at the beginning of the second ending.