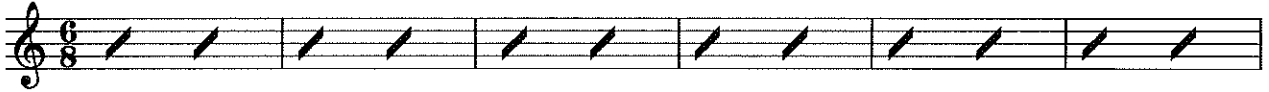


Even So Come

Words and Music by
Chris Tomlin, Jess Cates
and Jason Ingram

♩ = 163 **INTRO**

Dm Am C



VERSE 1 & 2

7 G G^{sus} G

Dm



1. All of cre - a - tion, all of the earth
2. Call back the sin - ner, wake up the saint,

11 Am

C

C^{sus} C



make straight a high - way, a path for the Lord; -- Je - sus is com - ing
let ev - 'ry na - tion shout of Your fame; -- Je - sus is com - ing

CHORUS 1a & 1b

15 G

Am

F



soon. Like a bride wait - ing for her
soon.

20 C

(Em⁷)
Em

Am

F



groom, we'll be a Church ___ read - y for You. Ev - 'ry heart long - ing for our

24 C (Em⁷) Em F C (G/B) G (G)

King, we sing: E-ven so, — come, Lord Je - sus come. E-ven so, —

30 F C 2nd time to Coda ⊕ VERSE 3 G Dm

— come, Lord Je - sus come. 3. There will be jus - tice,

35 Am

all will be new. Your name for - ev - er, faith - ful and true;

38 C C^{sus} C G D.S. al Coda

Je - sus is com - ing soon.

42 ⊕ Coda BRIDGE 1 F Am G⁽⁴⁾

So we wait, we wait for You. God, we

47 F Am G⁽⁴⁾ 1. 2. CHORUS 2 Am

wait; You're com - ing soon. So we Like a bride

53 F C Em⁷ Am

wait - ing for her groom, we'll be a Church — read - y for You. Ev - 'ry heart

57 F C 1. Em⁷ 2. Em⁷ F C

long-ing for our King, we sing: sing: E-ven so, ___ come, Lord Je - sus

63 G F C G

come. E-ven so, ___ come, Lord Je - sus come. E-ven so, _

69 F C G⁽⁴⁾ 1. 2.

___ come, Lord Je - sus come. E - ven so,

74 INSTRUMENTAL F C G⁽⁴⁾ 1, 2, 3. 4. BRIDGE 2 F

God, we wait, we

80 Am G F Am G

wait for You. God, we wait; You're com - ing soon.

86 F Am G F

God, we wait, we wait for You. Yes, we wait; You're

92 Am G F Am

com - ing soon.

97 G F Am G

God, we wait; You're com - ing soon, _____ oh!

CHORUS 2

103 Am F C Em7

Like a bride wait - ing for her groom, we'll be a Church ____ read - y for You.

107 Am F C

1. Em7	2. Em7
-----------	-----------

Ev - 'ry heart long - ing for our King, we sing: sing: E - ven so, -

112 F C G

_____ come, Lord Je - sus come. E - ven so,

repeat as desired

ENDING

116 F C G F

come, Lord Je - sus come.