

Days Of Elijah

Words and Music by
Robin Mark

♩=95 **VERSE**

B♭

E♭

B♭

F



1. These are the days of E - li - jah, de - clar - ing the Word of the Lord;
(2.) these are the days of E - ze - kiel, the dry bones be - com - ing as

4

B♭

E♭



And these are the days of Your ser - vant, Mo - ses,
flesh; And these are the days of Your ser - vant, Dav - id, re -

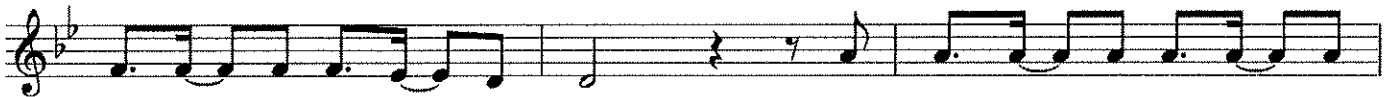
7

B♭

F

B♭

Dm



right - eous - ness be - ing re - stored; And though these are days of great
build - ing a tem - ple of praise; And these are the days of the

10

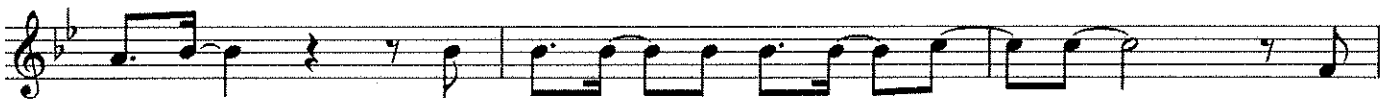
Gm

Gm/F

Cm

E♭

F



tri - als, of fam - ine and dark - ness and sword; Still
har - vest, the fields are as white in the world; And

13

B♭

E♭

B♭

F



we are the voice in the des - ert cry - ing, "Pre - pare ye the way of the Lord."
we are the la - bour - ers in Your vine - yard, de - clar - ing the Word of the Lord.

CHORUS 1a

16

B♭

B♭/F Cm/F

B♭

E♭



Be - hold He comes, rid - ing on the clouds, shin - ing like the sun

39 F C G Dm/G

shin - ing like the sun at the trum - pet call; Lift your

Detailed description: This block contains the first line of music, measures 39 to 41. The key signature has one flat (F major/D minor). The melody is written on a treble clef staff. Measure 39 starts with a quarter rest, followed by quarter notes G4, A4, Bb4, and C5. Measure 40 continues with quarter notes D5, E5, F5, and G5. Measure 41 consists of a quarter note G4, a quarter rest, and a quarter note F4. Chord symbols F, C, G, and Dm/G are placed above the staff. The lyrics are: "shin - ing like the sun at the trum - pet call; Lift your".

42 C F

voice, it's the year of Ju - bi - lee, and out of Zi - on's

Detailed description: This block contains the second line of music, measures 42 and 43. The melody continues on the treble clef staff. Measure 42 has quarter notes G4, A4, Bb4, and C5. Measure 43 has quarter notes D5, E5, F5, and G5. Chord symbols C and F are placed above the staff. The lyrics are: "voice, it's the year of Ju - bi - lee, and out of Zi - on's".

44 C G 1. C Em/G Dm/G 2. C

hill sal - va - tion comes. Be - hold, He comes.

Detailed description: This block contains the third line of music, measures 44 to 46. The melody continues on the treble clef staff. Measure 44 has quarter notes G4, A4, Bb4, and C5. Measure 45 has quarter notes D5, E5, F5, and G5. Measure 46 has a half note G4. Chord symbols C, G, C, Em/G Dm/G, and C are placed above the staff. The lyrics are: "hill sal - va - tion comes. Be - hold, He comes.".