

# Captivate Us

Words and Music by  
Charlie Hall, Nathan Nockels  
and Christy Nockels

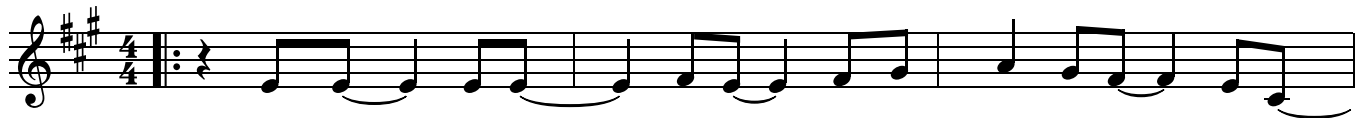
♩ = 100

## VERSE

A

E/G#

B<sup>7sus</sup>/F#



1. Your face \_ is beau - ti - ful, \_ and Your eyes are like \_ the stars. \_  
2. Your voice \_ is pow - er - ful, \_ and Your words are ra - diant bright. .

4

C#m<sup>11</sup>

D

A



Your gen - tle hands have heal - ing, \_  
In Your breath and shad - ow, \_ I will

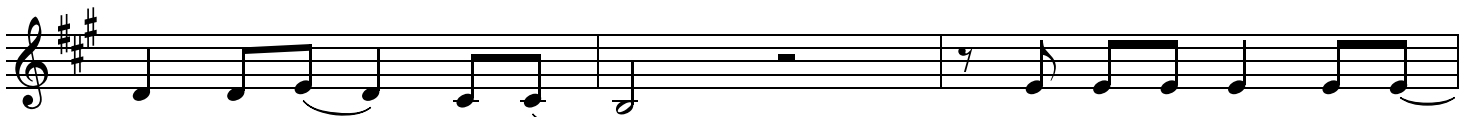
7

D

E

D

A



there in - side \_ the scars. \_ Your lov - ing arms, they draw .  
come close and \_ a - bid. \_ You whis - per love and life \_

10

E/G#

B<sup>7sus</sup>/F#

C#m<sup>7</sup>



\_ me near, \_ and Your smile, it brings \_ me peace. \_\_\_\_\_  
\_ di - vine, \_ and Your fel - low - ship \_ is free. \_\_\_\_\_

13

D

A

D

E



Draw me clos - er, oh, \_ my \_ Lord. \_ Draw me clos - er, Lord, \_ to Thee. .  
Draw me clos - er, oh, \_ my \_ Lord. \_ Draw me clos - er, Lord, \_ to Thee. .


CCLI Song # 4348021

© 2004 Word Music, LLC | sixsteps Music | worshiptogether.com songs | Rocketown Music, LLC. | Sweater Weather Music  
For use solely with the SongSelect. Terms of Use. All rights reserved. www.ccli.com

CCLI License # 79528


**CHORUS**

16 A D/A A D E



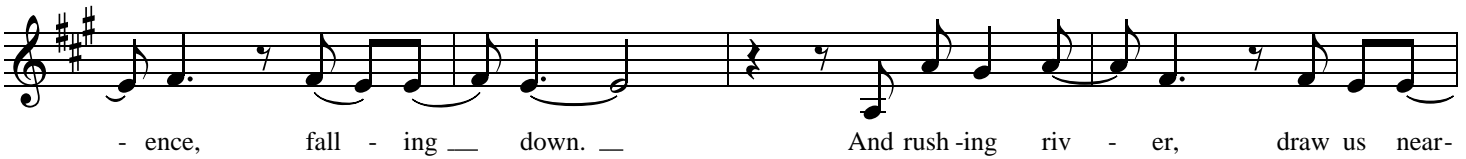
And cap - ti - vate us Lord Je - sus;

20 C#7 F#m D



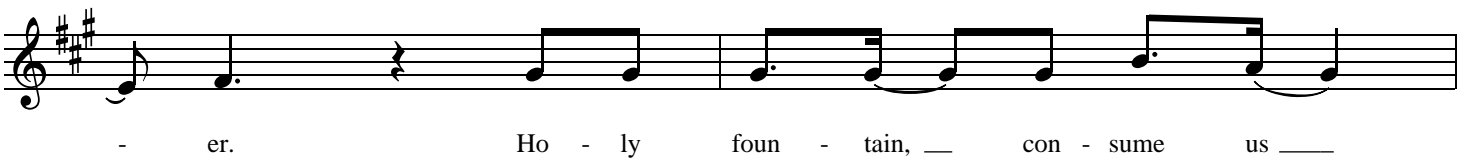
Set our eyes on You. Dev - as - tate us with Your pres-

23 E A D/A A A/C# D



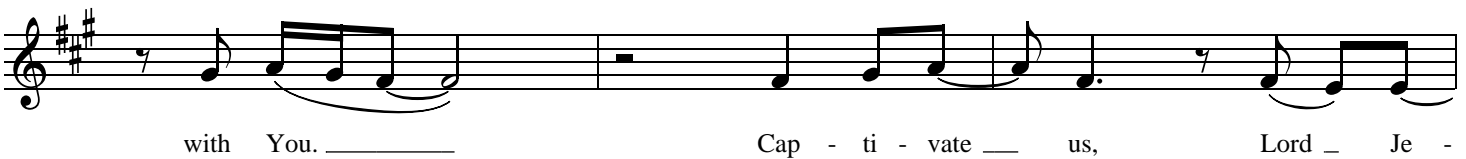
- ence, fall - ing down. And rush - ing riv - er, draw us near-

27 E C#7



- er. Ho - ly foun - tain, con - sume us


29 F#m D



with You. Cap - ti - vate us, Lord Je -

**INSTRUMENTAL**

32 E Last time to Coda ⊕ 1. F#m7 C#m/E D2



- sus, with You.

35 Am/C E7sus/B A A A<sup>2</sup>

BRIDGE

38 A A/C# D E

And let ev - 'ry - thing — be lost in the shad - ows — of the

41 Am/C E/G# A A/C# D

light of — Your face. — And let ev - 'ry chain — be bro - ken from .

44 E Am/C E/G# A A/C#

— me — as I'm — bound in — Your grace. — For Your yoke .

47 D E A E/G#

— is eas - y. Your bur - den is light. — You're full of wis - dom, pow'r.

50 F#m7 Gmaj9

— and might, — and — ev - 'ry eye —

52 D/A A D/A A D.S. al Coda

— will see — You. — And cap - ti - vate —

55 ⊕ Coda D<sup>2</sup> A/C# ENDING Bm<sup>11</sup> E<sup>sus</sup>

— Cap - ti - vate us, Lord Je - sus, with You. .

59 D<sup>2</sup> A/C# Bm<sup>7</sup> E(add4)

— Cap - ti - vate — us. —

63 F#m<sup>7</sup> C#m/E D<sup>2</sup> Am/C E<sup>7sus</sup>/B A

Ah, — ah, —

68 F#m<sup>7</sup> C#m/E D<sup>2</sup> Am/C E<sup>7sus</sup>/B A

ah. —