

# Breathe

Words and Music by  
John Arndt, David Gungor,  
Michael Gungor and Lisa Gungor

♩=64 **VERSE 1**

Am<sup>7</sup>

Fmaj<sup>7</sup>



1. Breathe, breathe on \_ me now, \_ o - pen \_ Your mouth .

3

Dm<sup>6</sup>

Am<sup>2</sup>

Am

Am<sup>7</sup>



\_ and speak the word \_ that heals \_ this bro-ken ground. \_ Say, say what \_ You will, .

6

Fmaj<sup>7</sup>

Dm<sup>6</sup>

Am<sup>2</sup>

Am



\_ as we \_ are still, \_ as we breathe in \_ the ver - y breath \_ of God. \_

**CHORUS**

9

F

Dm

C



Oh, Spir - it \_ of God, \_ here with \_ us now, \_ giv - ing \_ us life .

12

G

C/G

G<sup>7</sup>

C/G

G

F

Dm



\_ a - gain. Breathe, breathe on \_ us now, \_ fill us with \_ Your love, .

15

C

G

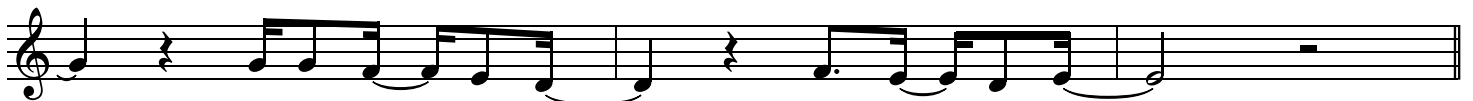
C/G

G<sup>7</sup>

C/G

G

Am



\_ send us with \_ Your pow'r, \_ Spir - it \_ of God. \_

VERSE 2

18 Am F/A B $\flat$  E $^7$ /G $\sharp$

Musical staff for line 18, starting with a treble clef and a 7/4 time signature. The melody consists of eighth and quarter notes with some rests.

2. Breathe, breathe on \_ us now, \_ o - pen \_ Your mouth \_ and speak the word \_ that heals .

21 Am $^2$  Am Am/E Am F F/C

Musical staff for line 21, continuing the melody from the previous line.

\_ this bro-ken ground. \_ Say, say what \_ You will, \_ show us \_ Your will, .

CHORUS

24 B $\flat$ /D Am/E E $^7$  Am $^2$  Am Am/G F

Musical staff for line 24, starting with a treble clef and a 7/4 time signature. The melody continues with eighth and quarter notes.

\_ as we breathe in \_ the ver - y breath \_ of God. \_ Oh, Spir - it \_ of God, .

27 Dm C G C/G G $^7$  C/G G

Musical staff for line 27, continuing the chorus melody.

\_ here with \_ us now, \_ giv - ing \_ us life \_ a - gain.

30 F Dm

Musical staff for line 30, continuing the chorus melody.

Breathe, breathe on \_ us now, \_ fill us with \_ Your love, \_

2nd time to Coda

32 C G C/G G $^7$  C/G G

Musical staff for line 32, continuing the chorus melody.

\_ send us with \_ Your pow'r, \_ Spir - it \_ of God. \_

INSTRUMENTAL

34 Dm Am C Play 7 times Dm Am E<sup>7</sup> D.S. al Coda

⊕ Coda

36 G C/G G<sup>7</sup> C/G G N.C.

Spir - it of God.