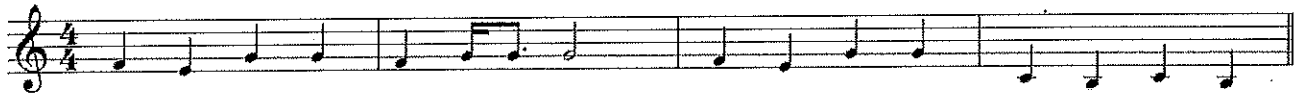


Blessings

Words and Music by
Laura Story

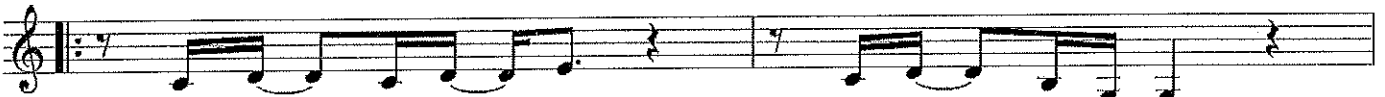
♩=58 **INTRO**

Dm⁷ C G²/B G/B F G^{SUS} G Em Dm⁷ C G²/B G/B F²(#4)



VERSE

5 F G Am⁷ F G Em



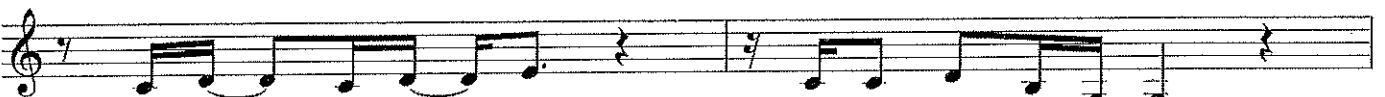
1. We pray ___ for bless - ings. We pray ___ for peace, ___
2. We pray ___ for wis - dom, Your voice ___ to hear. ___

7 F G Am⁷ B^b2 F²



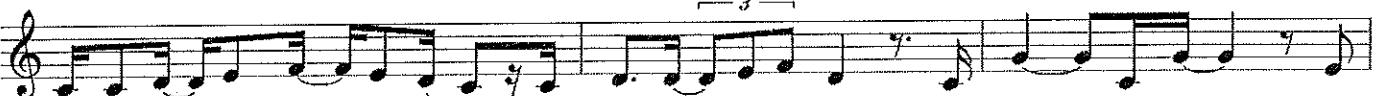
com-fort ___ for fam - i - ly, ___ pro - tec - tion while ___ we sleep. ___
We cry ___ in an - ger when ___ we can - not feel ___ You near. ___

9 F G Am⁷ F G Em



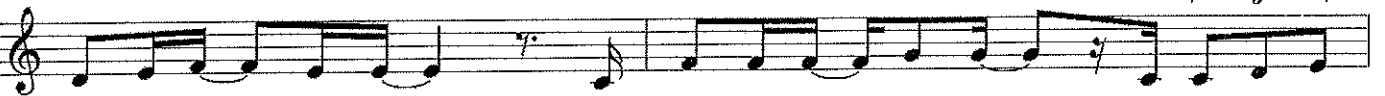
We pray ___ for heal - ing, for pros - per - i - ty. ___
We doubt ___ Your good - ness. We doubt Your love, ___

11 F G Am⁷ G/B C/E F²



We pray for ___ Your might - y hand ___ to ease our ___ suf-fer-ing. And all ___ the while ___ You
as if ev - 'ry prom - ise from ___ Your Word is ___ not e-nough. And all ___ the while ___ You

14 G^{SUS} G Am⁷ Dm⁷ C/E



hear each spo - ken need, ___ yet love is way ___ too much ___ to give us less -
hear each des - p'rate plea, ___ and long that we'd ___ have faith ___ to ___ be -

CHORUS 1

16 G^{sus} G C C^2

-er things. ___ 'Cause what if Your bless - ings come _through rain -drops? What if Your heal - lieve, ___

18 G/B Am^7 C/E

- ing comes _through tears? _ And what if a thou - sand sleep - less nights _ are what _ it takes.

20 F^2 Dm^7 C/E

___ to know _ You're near? _ And what if trials _ of _ this life _

INSTRUMENTAL

22 F^2 G^7sus Dm^7 C G^2/B G/B F G^{sus} G Em

___ are Your mer - cies in ___ dis-guise? ___

BRIDGE

25 F^2 G^7sus C^{sus} C Dm^7 C/E

___ are Your mer - cies in ___ dis-guise? ___ When friends be-tray _ us,

28 F G^{sus} G Dm^7 C/E

when dark -ness seems ___ to win, _ we _ know that pain _ re-minds _ this heart _ that

30 F G^{sus} G Dm C G/B F G Em

this is not, _ this is not _ our home. _____ It's not _ our _ home.

33 F G Am⁷ B \flat ² F² G^{sus} G

'Cause what if Your

CHORUS 2

36 C C² G/B

bles-sings come _ through rain -drops? What if Your heal - ing comes _ through tears? _ And what if a thou-

38 Am⁷ C/E F²

- sand sleep - less nights _ are what _ it takes _ to know _ You're near? _ What if my great-

40 C C² G/B

- est dis - ap-point -ments, or the ach - ing of _ this life, _ is a re-veal -

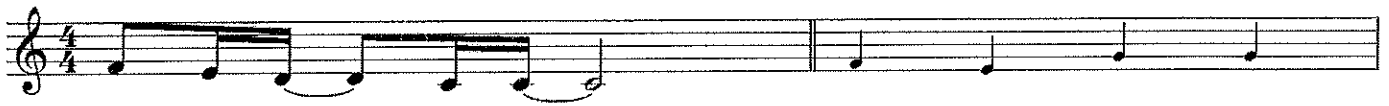
42 Am⁷ C/E F²

- ing of _ a great - er thirst _ this world can't _ sat - is - fy?

44 Dm⁷ C/E F² F²/G F²/A

And what if trials _ of _ this life, _ the rain, the storms, the _ hard-est nights _ are Your

47 G/B ENDING Dm⁷ C G²/B G/B



mer - cies in ___ dis - guise? ___

Detailed description: This block contains the first musical staff, starting at measure 47. The staff is in 4/4 time and features a treble clef. The melody consists of quarter notes: G4, A4, B4, C5, B4, A4, G4. The lyrics 'mer - cies in ___ dis - guise? ___' are written below the staff. Above the staff, the chord progression is G/B, followed by a boxed 'ENDING' label, then Dm⁷, C, G²/B, and G/B.

49 F G^{SUS} G Em Dm⁷ C G²/B G/B F G^{SUS} G C



Detailed description: This block contains the second musical staff, starting at measure 49. The staff is in 4/4 time and features a treble clef. The melody consists of quarter notes: F4, G4, A4, B4, C5, B4, A4, G4. The lyrics are not explicitly written for this staff. Above the staff, the chord progression is F, G^{SUS}, G, Em, Dm⁷, C, G²/B, G/B, F, G^{SUS}, G, and C.