

# The Trees Of The Field

Words by  
Steffi Geiser Rubin

Music by  
Stuart Dauermann

$\text{♩} = 126$  **VERSE**

Em

D<sup>7</sup>/F<sup>♯</sup>



You shall go out with joy \_\_\_\_ and be led forth with peace. \_\_\_\_ The



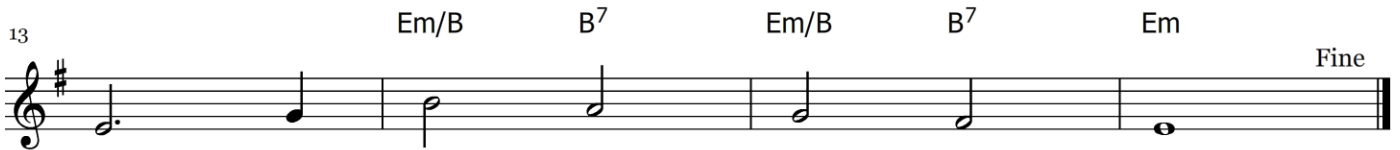
G C/G G D/F<sup>♯</sup> D<sup>7</sup> B/D<sup>♯</sup>

moun-tains and the hills will break forth \_\_\_\_ be - fore you; There'll be



Em

shouts of joy, \_\_\_\_ and all the trees of the

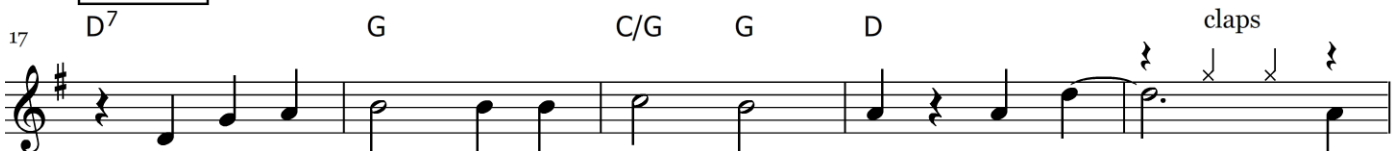


Em/B B<sup>7</sup> Em/B B<sup>7</sup> Em

Fine

field will clap, will clap their hands.

**CHORUS**



D<sup>7</sup> G C/G G D claps

And all the trees of the field will clap their hands, \_\_\_\_ the

claps



G

trees of the field will clap their hands; \_\_\_\_ The trees of the

The Trees Of The Field - 2

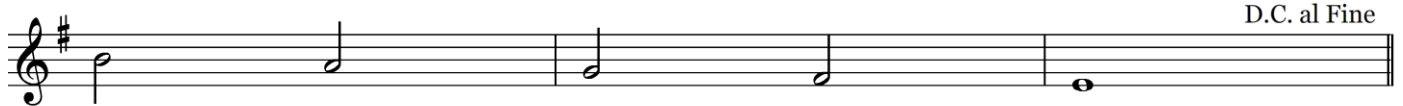
27 C/G G D claps



field will clap their hands, \_ \_ while

Detailed description: This block contains the first line of musical notation, measures 27 through 30. The key signature is one sharp (F#). Measure 27 starts with a treble clef and a C/G chord, with a half note G4. Measure 28 has a G chord and a half note G4. Measure 29 has a D chord and a half note A4. Measure 30 has a D chord, a half note B4, and a dotted half note G4. Above the staff, there are two 'claps' indicated by a downward-pointing 'x' and a squiggle. The lyrics 'field will clap their hands, \_ \_ while' are written below the staff.

30 G D<sup>7</sup> Em B<sup>7</sup> Em D.C. al Fine



you go out with joy.

Detailed description: This block contains the second line of musical notation, measures 30 through 33. The key signature is one sharp (F#). Measure 30 has a G chord and a half note G4. Measure 31 has a D7 chord and a half note A4. Measure 32 has an Em chord and a half note B4. Measure 33 has a B7 chord and a half note C5. Measure 34 has an Em chord and a whole note G4. The lyrics 'you go out with joy.' are written below the staff. The piece ends with a double bar line and the instruction 'D.C. al Fine'.