

Since The World Began

Words and Music by
Mac Powell and Trevor Morgan

♩ = 76

G²(no3)

D

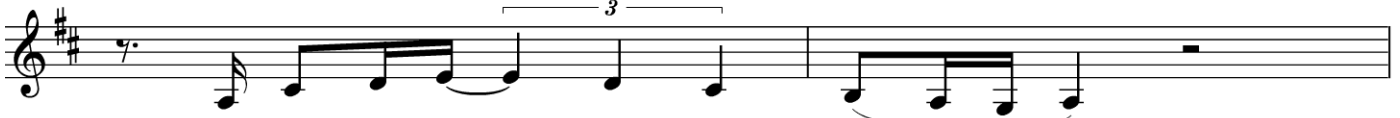


1. Oh, that You ___ would burst ___ from the heav - ens, ___

3

A^{sus}

Em⁷



and how the moun - tains would quake; _____

5

G²(no3)

D



That You would make ___ the na - tions ___ trem - ble, all Your

7

A^{sus}

Em⁷

⌘
A^{sus}/C#



en - e - mies _ would learn ___ of _ Your fame. _____ How then _ shall we _

10

G²(no3)

F#m⁷

A



___ be saved? _____ How can we ___ be saved? ___

13

Em¹¹

D

A^{sus}

Em¹¹



Since the world _ be - gan ___ no ear ___ has heard, _ no eye ___ has seen ___ a God _

CCLI Song # 5484582

© 2009 Consuming Fire Music | Trevor Morgan Music

For use solely with the SongSelect Terms of Use. All rights reserved. www.ccli.com

CCLI License # 79528

15 $G^{2(no3)}$ D A^{sus} A

_____ like You, _____ oh, _____ a God _____ like You. _____

17 Em^{11} D A^{sus} Em^{11}

Since the world_ be - gan _____ no ear _____ has heard, _ no eye _____ has seen _ a God_

19 $G^{2(no3)}$ D A^{sus} A Bm^7

2nd time to Coda \oplus

_____ like You, _ oh, _ a God _____ like You. _ Oh. _____ . .

22 $G^{2(no3)}$

2. Like au-tumn leaves, _ we _ are with-

24 D A^{sus} Em^7

ered, _____ swept a - way _____ by the wind. _____

27 $G^{2(no3)}$ D

Oh, _____ have mer - cy on _____ us, Fa - ther, _____ and

29 A^{sus} Em^7 D.S. al Coda

please don't re - mem - ber _____ our sins. _____

31 \oplus Coda
 A^{SUS} A D

_____ like You! _____ O Lord, _____ You are _____ our Fa - ther; We are clay, _

33 Gmaj⁹ Bm⁷

_____ You are _____ the Pot - ter. We are all _____ formed by _____ Your _____ hands, _____ ac -

35 A^{SUS} A D

-cord-ing to _____ Your plans. _____ O _____ Lord, _____ You are _____ our Fa - ther; We are clay, _

37 Gmaj⁹ Bm⁷

_____ but You're _____ the Pot - ter. We are all _____ formed by _____ Your _____ hands, _____ ac -

39 A^{SUS} A Em¹¹ D

-cord-ing to _____ Your plans. _____ Since the world _____ be - gan _____ no ear _____

41 A^{SUS} Em¹¹ G^{2(no3)} D

_____ has heard, _____ no eye _____ has seen _____ a God _____ like _____ You, _____ oh, _____ a God _____

43 A^{SUS} A Em¹¹ D

_____ like You. _____ Oh, _____ since the world _____ be - gan _____ no ear _____

45 A^{sus} Em^{11} $G^2(no3)$ D

— has heard, — no eye — has seen — a God — like — You, — oh, — a God —

Detailed description: This musical staff covers measures 45 and 46. It begins with a treble clef and a key signature of two sharps (F# and C#). The melody consists of eighth and quarter notes. Above the staff, the chords are labeled as A^{sus} , Em^{11} , $G^2(no3)$, and D. The lyrics are written below the staff, with dashes indicating where the notes align with the words.

47 A^{sus} A Em^{11} D A^{sus}

— like You. — Yeah. —

Detailed description: This musical staff covers measures 47 and 48. It continues with the same treble clef and key signature. The melody features a long note in measure 47 that spans into measure 48. Above the staff, the chords are labeled as A^{sus} , A, Em^{11} , D, and A^{sus} . The lyrics are written below the staff.

50 $G^2(no3)$ D A^{sus} A Em^{11} D

Detailed description: This musical staff covers measures 50 and 51. It continues with the same treble clef and key signature. The melody consists of eighth and quarter notes. Above the staff, the chords are labeled as $G^2(no3)$, D, A^{sus} , A, Em^{11} , and D.

53 A^{sus} $G^2(no3)$ D A

Detailed description: This musical staff covers measures 53 and 54. It continues with the same treble clef and key signature. The melody consists of eighth and quarter notes. Above the staff, the chords are labeled as A^{sus} , $G^2(no3)$, D, and A. The staff ends with a double bar line.